



V10.5.0 Release Notes - LiveEdge® Max

2025-02-05

LiveEdge® Max V10.5.0.380

Bundled Cloud Agent: V1.23.0

Features

- > **(*Beta) Dynamic HTML5 Graphic Overlay**
 - **Product: Max**
 - **Graphic Overlay support up to 1920x1080p60** is now available on LiveEdge Max software with the appropriate licensing! This feature includes native support for entering the desired HTML5 URL via the local web UI, LiveEdge Cloud UI, and local REST API.
 - * - **Using more than one Dynamic Graphic Overlay instance can cause instability with higher-demand rendering loads.**
 - * - [Contact us](#) if you'd like to enroll in our beta program!
- > **Deinterlacing support***
 - **Product: Max**
 - **Interlaced SDI and HDMI input resolutions** 1920x1080i50, 1920x1080i59.94, 1920x1080i59.95, & 1920x1080i60 are now supported with a deinterlacer on Max devices via software.
 - * - With deinterlacing mode enabled, the device will be unable to ingest 4K video input. If enabled, please disable deinterlacing mode to ingest 4K video.
 - * - Must be enabled via local REST API call or LiveEdge Cloud API REST direct call to endpoint 8091. Check out [this article](#) for more information.

Bug Fixes / Improvements

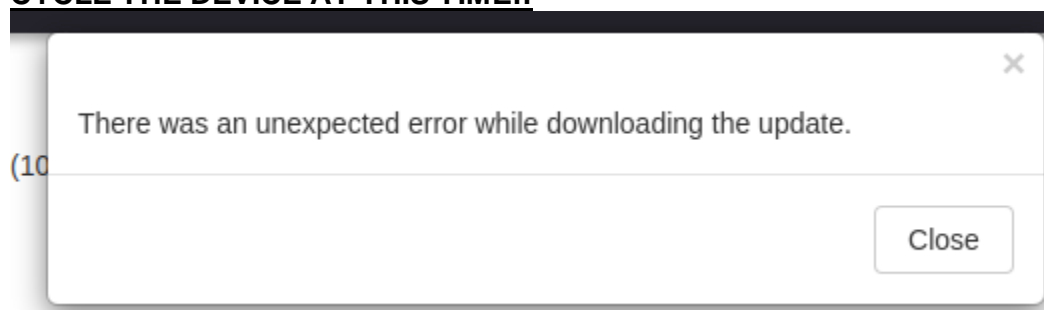
- > Front panel display MAC address bug fix
 - Product: Max
 - When powering a Max device without an Ethernet cable attached, the device would previously show an incorrect MAC address. A bug fix is supplied in this release so that the appropriate MAC address is always displayed.

- > XML bug fixes and enhancements:
 - Product: Max
 - XML schema and example updates for a better representation of what the Max platform supports.
 - DataEncoder element now supports optional InputChannelID
 - SCTE-35 data encoders now permit setting InputChannelID
 - Bug fix for File Record not allowing MediaContainer to be set via XML.
 - Bug fix for an issue preventing FTP Upload from enabling via XML.
 - Bug fix for Zixi Encryption Key Size not changing from the default or enabling Zixi Encoder Back Pressure via XML.
- > OS stability enhancements:
 - Product: Max
 - General monitoring including stability improvements for container-based LiveEdge OS processes.
- > Web UI changes:
 - Product: Max
 - Local web UI LiveEdge Cloud one-click enrollment title no longer contains “(Beta)”.

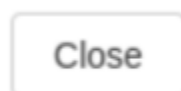
Known Behaviors

LiveEdge® Max behaviors:

- > **Software updates:**
 - **This software version is very large in size and will take much longer than normal to download and apply the update. Please be patient as the update files are being downloaded.**
 - If updating your device(s) from the local web UI, it is likely you will encounter an error stating, “There was an unexpected error while downloading the update.” after 5 minutes of waiting for the download to complete. **PLEASE DO NOT REBOOT OR POWER CYCLE THE DEVICE AT THIS TIME!!**



- To work around this error:
 1. Click “Close” on the pop-up modal.



2. Refresh your web browser page.
3. Ensure there is a banner at the top of the page stating, “**Please reboot to finish installing updates.**”

Please reboot to finish installing updates.

- If you **do not** see the banner “**Please reboot to finish installing updates.**”:
 1. You may need to refresh your web browser several times. **DO NOT** click “Check for Update”.
 2. Continue to refresh your web browser and if this banner is not displayed within an additional 5 minutes, please [submit a support ticket](#) so our support team can assist with troubleshooting the issue.
- 4. If the banner is displayed as shown in #3, navigate to the “Advanced” menu of your web UI and ensure under the “Reboot Device” section, the orange button shows “Reboot & Update”.

Reboot Device

If you're experiencing any issues, try a reboot first!

Reboot & Update

5. Click “Reboot & Update” and allow the device to reboot and apply the update files.
 - If you have tried the above and are still encountering issues, please [submit a support ticket](#) and we will be happy to assist!
- > **Test Pattern Generator for input channels is now limited to 1920x1080p60 instead of 3840x2160p60.**
- > External Storage:
 - An SD card must be inserted prior to device boot in order for it to mount properly **the first time**. After being recognized from the initial mount, SD cards can be inserted/removed at any time and will then be recognized and mounted by the device.

All LiveEdge® Platforms:

- > [Notice for RTMP Users: Temporary Facebook Integration Issues](#)
 - Facebook has temporarily blocked our RTMP integration. If your live streaming is impacted, you can use our alternative method by setting up a Generic RTMP stream. Please follow the steps in [this guide](#) to continue streaming seamlessly.
 - We apologize for any disruption this may have caused and appreciate your patience as we continue working on resolving this issue. Thank you for choosing Videon for your live streaming needs!



Did you know?

> **New Form Factor - LiveEdge® 2Go**

- The LiveEdge® Ecosystem is now available in two small, rugged, and portable form factors - **LiveEdge® 2Go and 2Go Mini** - designed for the pitch, court, track, rink, or wherever your live events take you, prepared to take on the most grueling on-the-go workflows. Both subscriptions include Compute, Cloud Control, vCare and an encoding container per input - perfect for supporting multiple camera angles or backup feeds - add a la carte licensing options to personalize your workflow. Check out all the details [Here](#).